

BANDVULC'S CONTILIFECYCLE JOURNEY CONTINUES WITH NEW BRANDING

HOME / ALL NEWS / BANDVULC'S CONTILIFECYCLE JOURNEY CONTINUES WITH NEW BRANDING

CATEGORIES

ALL NEWS

BANDVULC

CONTINENTAL

TYRES

TESTIMONIALS

INNOVATION

EXPERTISE

SUSTAINABILITY

QUALITY

RETREADING

BANDVULC'S CONTILIFECYCLE JOURNEY CONTINUES WITH NEW BRANDING

LET US CONTACT YOU 

plant, which produces hot retread tyres. The Bandvulc plant now employs some 200 people in and around Devon and was welcomed into the Continental portfolio in 2016. Our hot-retread production focuses on the UK market with Bandvulc tyres being designed and manufactured in Ivybridge as well as producing ContiRe branded tyres in partnership with the Stöcken plant. As our integration continues there is no impact to job security with no redundancies taking place as a result of the Continental rebranding.



Bandvulc's Distribution Centre has been rebranded as part of it's integration with Continental Group Logistics

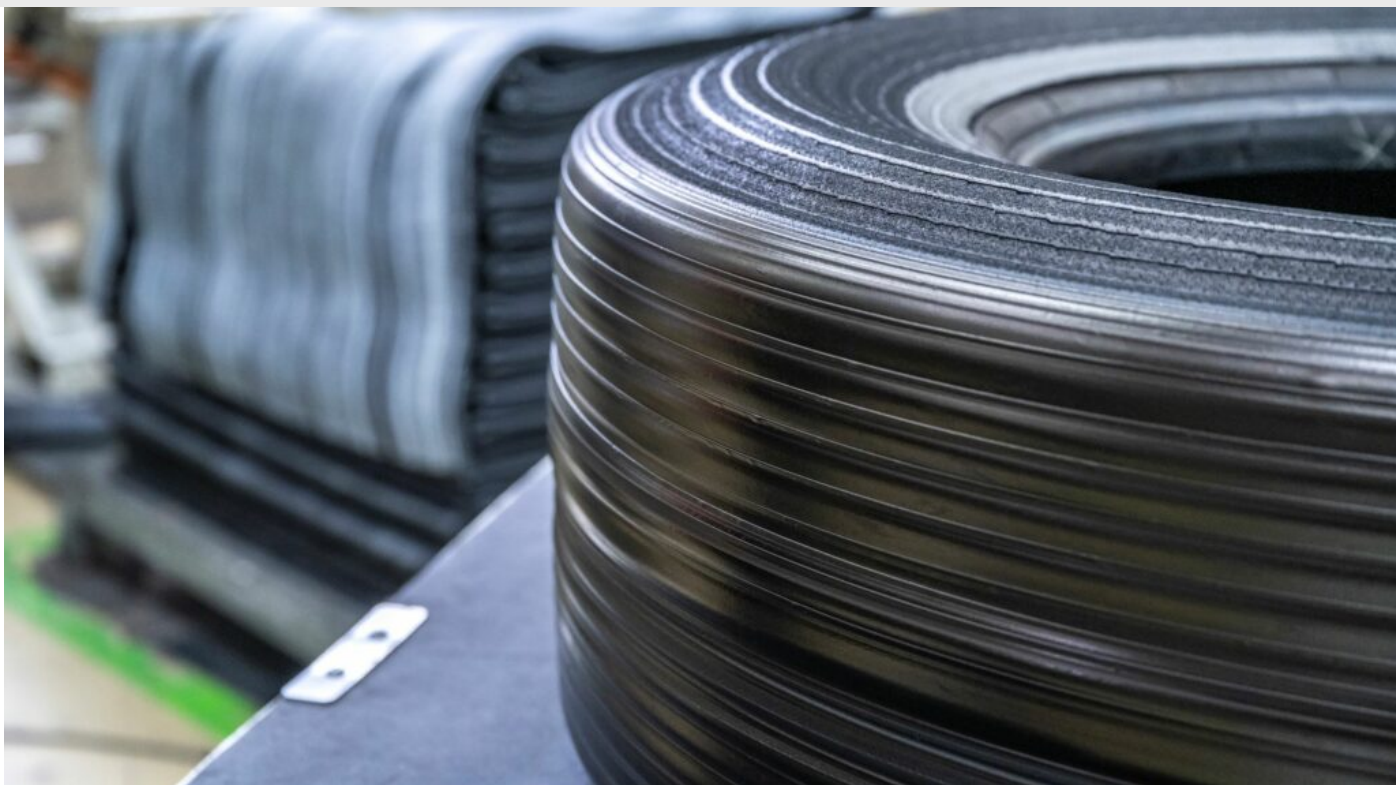
Tony Mailling, Our Head of Hot Retread Production EMEA and Plant Manager of ContiLifeCycle Ivybridge and Stöcken, said: "Although the name has changed, the values on which Bandvulc was built will continue at our Ivybridge site. The facility is undoubtedly one of the most technically advanced retreading plants in Europe and our people are a testament to this achievement. In becoming a LifeCycle site, Ivybridge's position is strengthened as part of the wider Continental manufacturing network.



Tony Mailling, Head of Hot Retread Production at the Ivybridge and Stöcken plants.

“With the Bandvulc tyre range set to grow further during the next 12 months, staff and customers can rest assured that the brand will continue to be a major player in the Continental tyre range.”

ContiLifeCycle is Continental’s cradle-to-grave approach to maximising tyre longevity and sustainability. New Continental truck and bus tyres are designed with retreadability in mind, and casings are engineered for multiple service lives. The LifeCycle plants in Stöcken and Ivybridge sit at the core of Continental’s retread operations.



Bandvulc's innovative retreaded tyre range services a diverse array of road haulage applications, including long-haul, regional distribution, construction and urban waste.



LET US CONTACT YOU 

EXPLORE

Home
Tyres
Support
News
Contact
Galahad Login

BRAND

Retreading
Innovation
Expertise
Quality
Conti 360° Solutions
Recruitment

LEGAL

Legal Notice
Data Protection & Call Recording
Marketing Opt In/Out
Privacy
Cookie
COVID-19 Notice

CONTACT

General: 01752 429198
Sales: 0845 6000 801

